



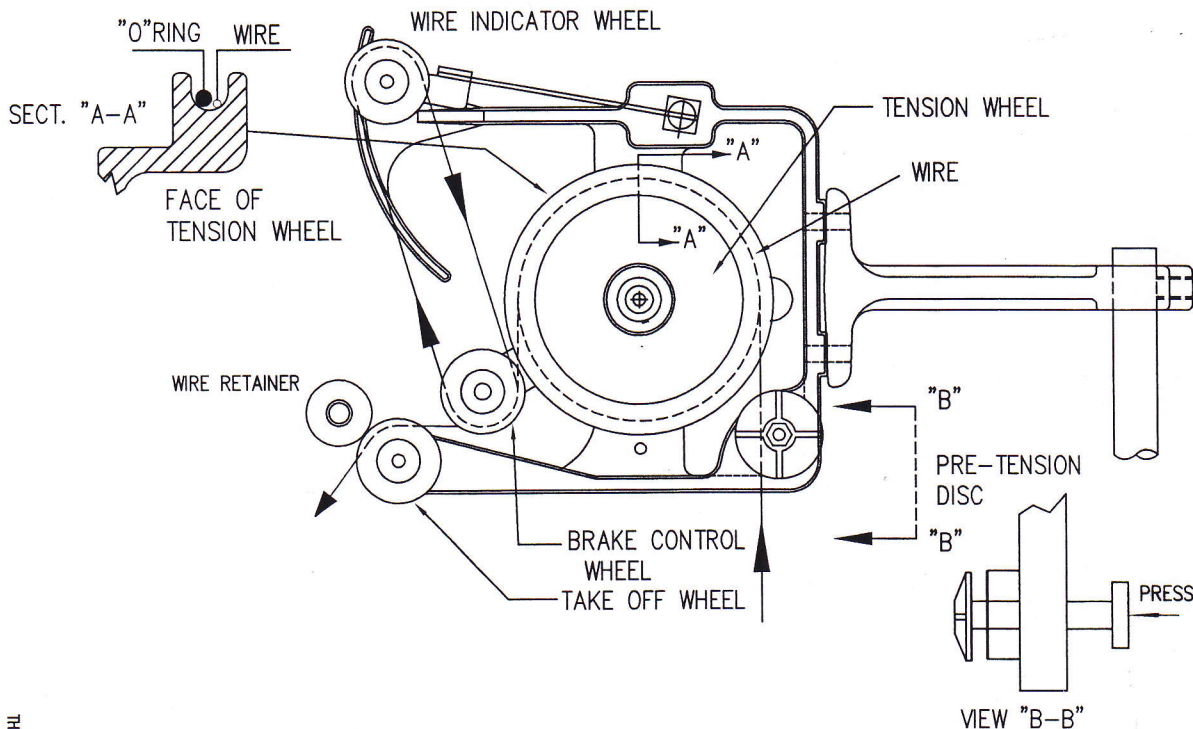
TEL-A-TENSION

Model Series 3000

Threading Instructions

1. Open "pre-tension disk" by pressing against the head of the screw as seen in view "B-B".
2. Guide the wire from the supply spool between the felt disks, then release the pressure to capture the wire between the disks.
3. Thread the wire around the large "tension wheel" in a counter clock-wise direction, approximately 1-1/2 turns, placing it between the outside of the wheel and the o-ring. (As Pictured)
4. Bring the wire away from the tension wheel and under the "brake control wheel" up and over the "indicator wheel" then down through the backside of the "brake control wheel", finally exiting over the top of the "take-off wheel".

NOTE: The "wire retainer" which you will find loose in the box, is an optional part. To install it, remove the "take-off wheel"; place the "wire retainer" on followed by the "take-off wheel". Adjust the "wire retainer" close to the "take-off wheel" to retain the wire in the grooves of the pulley if the wire becomes slack.



THROINSTOWS

502 W. Main Street
 Albion, NE 68620
 Tel. 402-395-5081
 Fax. 402-395-6788
 Toll Free 800-367-0486